

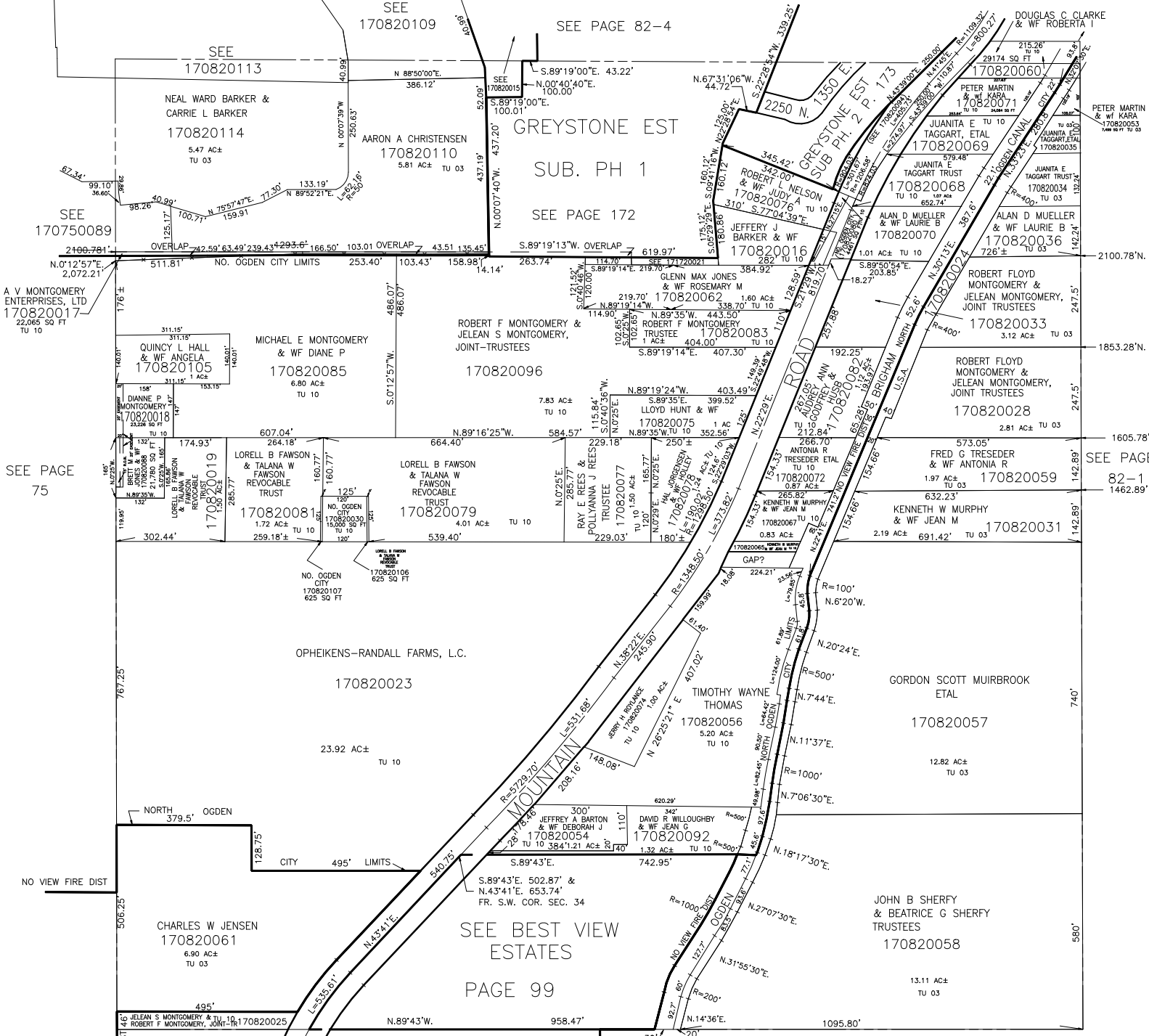
S.W. 1/4 OF SECTION 34, T.7N., R.1W., S.L.B. & M.

IN NORTH OGDEN CITY & WEBER COUNTY

SCALE 1" = 200'

ALSO SEE PAGE 82-4

TAXING UNIT: 03, 10



A V MONTGOMERY ENTERPRISES, LTD 170820017

SEE PAGE 75

SEE PAGE 82-1

SEE BEST VIEW ESTATES PAGE 99

SEE BOOK 11, PAGE 2

NOTE: ALL BEARINGS & LENGTHS ARE AT THE ϵ